
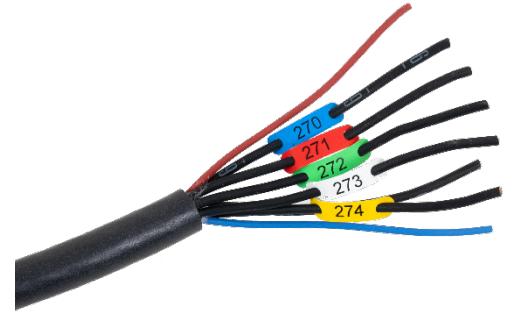


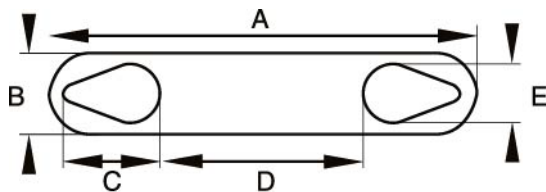
	<b>DATA SHEET</b>	
Valid from: 06-12-2018	<b>FLEXIMARK® Flexiprint LF</b>	

For single core marking and marking of fiber optic wires and cables.  
 For marking before assembly.  
 Printing with standard laser office printer.  
 Printing with FLEXIMARK® Software.  
 Delivered on sheets with content 75 and 10 sheets/unit.  
 Unique marking system.



**Technical data:**

Material:	Polyester, halogen free
Temperature range:	-40°C up to +125°C
Cable area:	0,25-16 mm <sup>2</sup>
Colours:	white, yellow, blue, green, red
Label sheet dimensions (WxH):	80-100 x 210 mm
Recommended maximum amount of characters:	7 characters (L-version 15 characters)
Markers/sheet:	60 markers/sheet (L-version: 30 markers/sheet and F3: 20 markers/sheet)
Recommended storage:	Cool and dry in original packaging



Flexiprint type:	Cable area mm <sup>2</sup>	Measurement A (mm)	Measurement B (mm)	Measurement C (mm)	Measurement D (mm)	Measurement E (mm)
F0	0,25-0,75	22,9	5,2	3,9	13,1	2,4
F1	0,75-1,5	23,0	5,2	4,9	11,2	3,5
F1L	0,75-1,5	34,0	5,2	5,0	22,0	3,5
F1B	1,5-2,5	25,0	5,7	5,9	11,2	4,2
F1BL	1,5-2,5	36,0	5,7	6,0	22,0	4,2
F2	2,5-6	26,0	7,0	6,5	11,0	5,5
F3	6-16	41,0	11,0	10,5	17,0	8,4

**Other product data:**

ETIM classification: EC001530

**Advantages:**

Easy marking before assembly.  
 Printing with standard laser office printer.  
 Easy printing together with FLEXIMARK® Software.  
 Unique marking system with fast mounting on site.  
 Material tested by a third independent expert.

Creator: Fleximark/LR	Document: DB83254410EN FLEXIMARK Flexiprint LF wire marking Version: 02	Page 1 of 4
-----------------------	---	-------------

# DATA SHEET

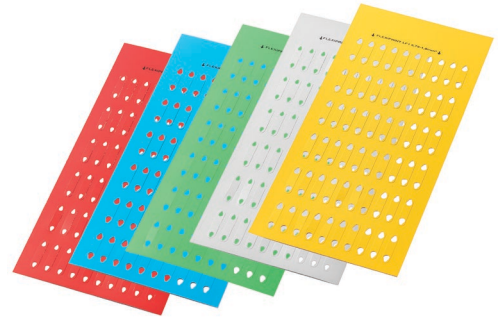


Valid from:  
06-12-2018

FLEXIMARK® Flexiprint LF

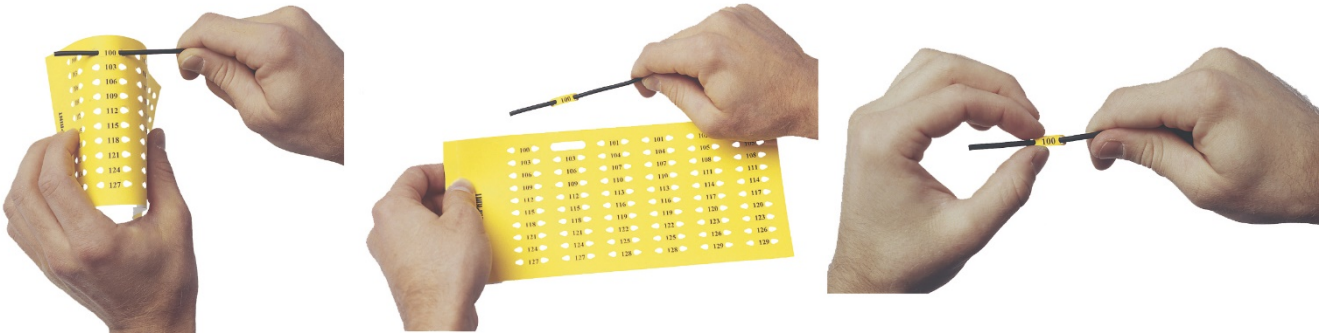
## Delivery:

Delivers in packages as sheets (10 or 75 sheets per package) with 20-60 markers on each sheet.



## Mounting:

FLEXIMARK® Flexiprint LF is mounted directly on the wire and thin cable. For cables with an area more than 16 mm<sup>2</sup> a cable tie can be used for mounting.



Product data (Content 10 sheets/unit):


E-nr.	LAPP Part no.	Article designation	Cable area (mm <sup>2</sup> )	Colour	Marker dimensions (mm)	Markers per sheet	Content (sheets/unit)	PU
2972090	83254410	FLEXIPRINT LF0 Y 0.25-0.75	0,25-0,75	Yellow	22,9x5,2	60	10	1
2972407	83254412	FLEXIPRINT LF0 GR 0.25-0.75	0,25-0,75	Green	22,9x5,2	60	10	1
2972408	83254414	FLEXIPRINT LF0 B 0.25-0.75	0,25-0,75	Blue	22,9x5,2	60	10	1
2972409	83254416	FLEXIPRINT LF0 W 0.25-0.75	0,25-0,75	white	22,9x5,2	60	10	1
2972410	83254418	FLEXIPRINT LF0 R 0.25-0.75	0,25-0,75	Red	22,9x5,2	60	10	1
2972091	83254430	FLEXIPRINT LF1 Y 0.75-1.5	0,75-1,5	Yellow	23x5,2	60	10	1
2972411	83254432	FLEXIPRINT LF1 GR 0.75-1.5	0,75-1,5	Green	23x5,2	60	10	1
2972412	83254434	FLEXIPRINT LF1 B 0.75-1.5	0,75-1,5	Blue	23x5,2	60	10	1
2972413	83254436	FLEXIPRINT LF1 W 0.75-1.5	0,75-1,5	White	23x5,2	60	10	1
2972414	83254438	FLEXIPRINT LF1 R 0.75-1.5	0,75-1,5	Red	23x5,2	60	10	1
2972095	83254447	FLEXIPRINT LF1L Y 0.75-1.5	0,75-1,5	Yellow	34x5,2	30	10	1
2972415	83254448	FLEXIPRINT LF1L W 0.75-1.5	0,75-1,5	White	34x5,2	30	10	1
2972092	83254470	FLEXIPRINT LF1B Y 1.5-2.5	1,5-2,5	Yellow	25x5,7	60	10	1
2972416	83254472	FLEXIPRINT LF1B GR 1.5-2.5	1,5-2,5	Green	25x5,7	60	10	1
2972417	83254474	FLEXIPRINT LF1B B 1.5-2.5	1,5-2,5	Blue	25x5,7	60	10	1
2972418	83254476	FLEXIPRINT LF1B W 1.5-2.5	1,5-2,5	White	25x5,7	60	10	1
2972419	83254478	FLEXIPRINT LF1B R 1.5-2.5	1,5-2,5	Red	25x5,7	60	10	1
2972096	83254487	FLEXIPRINT LF1BL Y 1.5-2.5	1,5-2,5	Yellow	36x5,7	30	10	1
2972420	83254488	FLEXIPRINT LF1BLW 1.5-2.5	1,5-2,5	White	36x5,7	30	10	1
2972093	83254510	FLEXIPRINT LF2Y 2.5-6	2,5-6	Yellow	26x7	60	10	1
2972421	83254516	FLEXIPRINT LF2W 2.5-6	2,5-6	White	26x7	60	10	1
2972094	83254530	FLEXIPRINT LF3Y 6-16	6-16	Yellow	41x11	20	10	1
2972422	83254536	FLEXIPRINT LF3W 6-16	6-16	White	41x11	20	10	1

	<b>DATA SHEET</b>	
Valid from: 06-12-2018	<b>FLEXIMARK® Flexiprint LF</b>	

**Product data (Content 75 sheets/unit):**

E-nr.	LAPP Part no.	Article designation	Cable area (mm <sup>2</sup> )	Colour	Marker dimension s (mm)	Markers per sheet	Content (sheets/unit)	PU
2972054	83280005	FLEXIPRINT LFO Y 0.25-0.75	0,25-0,75	Yellow	22,9x5,2	60	75	1
2972385	83254402	FLEXIPRINT LFO GR 0.25-0.75	0,25-0,75	Green	22,9x5,2	60	75	1
2972386	83254404	FLEXIPRINT LFO B 0.25-0.75	0,25-0,75	Blue	22,9x5,2	60	75	1
2972387	83254406	FLEXIPRINT LFO W 0.25-0.75	0,25-0,75	White	22,9x5,2	60	75	1
2972388	83254408	FLEXIPRINT LFO R 0.25-0.75	0,25-0,75	Red	22,9x5,2	60	75	1
2972055	83254420	FLEXIPRINT LF1 Y 0.75-1.5	0,75-1,5	Yellow	23x5,2	60	75	1
2972389	83254422	FLEXIPRINT LF1 GR 0.75-1.5	0,75-1,5	Green	23x5,2	60	75	1
2972390	83254424	FLEXIPRINT LF1 B 0.75-1.5	0,75-1,5	Blue	23x5,2	60	75	1
2972391	83254426	FLEXIPRINT LF1 W 0.75-1.5	0,75-1,5	White	23x5,2	60	75	1
2972392	83254428	FLEXIPRINT LF1 R 0.75-1.5	0,75-1,5	Red	23x5,2	60	75	1
2972085	83254440	FLEXIPRINT LF1L Y 0.75-1.5	0,75-1,5	Yellow	34x5,2	30	75	1
2972393	83254446	FLEXIPRINT LF1L W 0.75-1.5	0,75-1,5	White	34x5,2	30	75	1
2972056	83254460	FLEXIPRINT LF1B Y 1.5-2.5	1,5-2,5	Yellow	25x5,7	60	75	1
2972394	83254462	FLEXIPRINT LF1B GR 1.5-2.5	1,5-2,5	Green	25x5,7	60	75	1
2972395	83254464	FLEXIPRINT LF1B B 1.5-2.5	1,5-2,5	Blue	25x5,7	60	75	1
2972396	83254466	FLEXIPRINT LF1B W 1.5-2.5	1,5-2,5	White	25x5,7	60	75	1
2972397	83254468	FLEXIPRINT LF1B R 1.5-2.5	1,5-2,5	Red	25x5,7	60	75	1
2972086	83254480	FLEXIPRINT LF1BL Y 1.5-2.5	1,5-2,5	Yellow	36x5,7	30	75	1
2972398	83254486	FLEXIPRINT LF1BL W 1.5-2.5	1,5-2,5	White	36x5,7	30	75	1
2972087	83254500	FLEXIPRINT LF2 Y 2.5-6	2,5-6	Yellow	26x7	60	75	1
2972399	83254502	FLEXIPRINT LF2 GR 2.5-6	2,5-6	Green	26x7	60	75	1
2972400	83254504	FLEXIPRINT LF2 B 2.5-6	2,5-6	Blue	26x7	60	75	1
2972401	83254506	FLEXIPRINT LF2 W 2.5-6	2,5-6	White	26x7	60	75	1
2972402	83254508	FLEXIPRINT LF2 R 2.5-6	2,5-6	Red	26x7	60	75	1
2972088	83254520	FLEXIPRINT LF3 Y 6-16	6-16	Yellow	41x11	20	75	1
2972403	83254522	FLEXIPRINT LF3 GR 6-16	6-16	Green	41x11	20	75	1
2972404	83254524	FLEXIPRINT LF3 B 6-16	6-16	Blue	41x11	20	75	1
2972405	83254526	FLEXIPRINT LF3 W 6-16	6-16	White	41x11	20	75	1
2972406	83254528	FLEXIPRINT LF3R 6-16	6-16	Red	41x11	20	75	1

Creator: Fleximark/LR	Document: DB83254410EN FLEXIMARK Flexiprint LF wire marking Version: 02	Page 3 of 4
-----------------------	--	-------------

<b>DATA SHEET</b>		
Valid from: 06-12-2018	<b>FLEXIMARK® Flexiprint LF</b>	

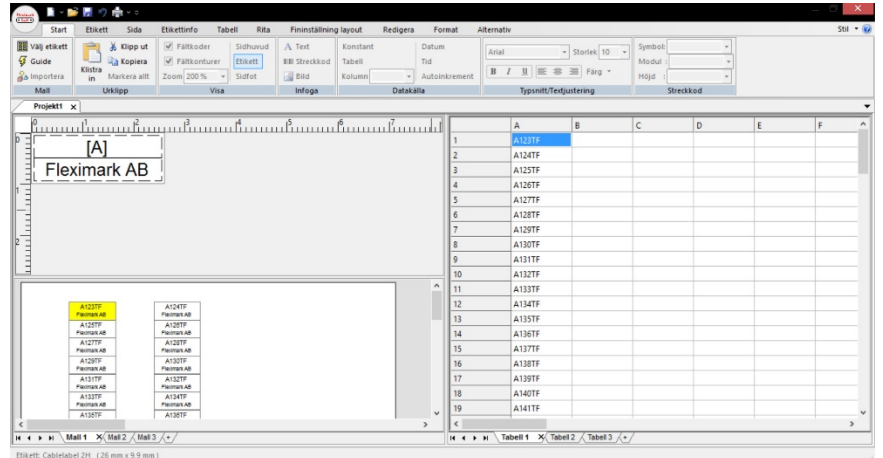
**Resistance of FLEXIMARK® Flexiprint LF:**

RICE test SP-2171

Resistance test		Chemical resistance test with abrasion							
<b>FLEXIMARK®</b>	UV	Ageing	Diesel	Acid (H <sub>2</sub> SO <sub>4</sub> ) 25%	Alkali (Detergent solution, 10%)	Distilled water	Salt water (5% NaCl)	Transformer oil (Nytro 10X)	Ethanol
<b>Flexiprint LF</b>	Tested & Recommended	Tested & Recommended	Tested & not recommended	Tested & not recommended	Tested & recommended	Tested & recommended	Tested & recommended	Tested & recommended	Tested & not recommended

**Related products:**

FLEXIMARK® Flexiprint LF wire marking can be printed on a standard laser office printer together with FLEXIMARK® Software. The label printing software is available within FLEXIMARK® Marking assortment and can also be downloaded from the homepage.



**Note:**

Pictures are not to scale and do not represent detailed images of each product.

Creator: Fleximark/LR	Document: DB83254410EN FLEXIMARK Flexiprint LF wire marking Version: 02	Page 4 of 4
-----------------------	--	-------------